

# Summary

**1 Urban Resilience and 100 Resilient Cities**

**2 Roma Resiliente and its stakeholder engagement process**

**3 Urban resilience and geo-spatial data in Rome**

PIONEERED BY THE  
ROCKEFELLER FOUNDATION

100



CITIES



1.4 million new people are moving into cities every week.

People are drawn to cities as centres of economic activity, social connection, opportunity, and innovation.

What are acute shocks?

What are chronic stresses? <sup>4</sup>

# What are acute shocks?

Earthquake

Wildfires

Flooding

Sandstorms

Extreme cold

Hazardous materials accident

Severe storms and extreme rainfall

Terrorism

Disease outbreak

Riot/civil unrest

Infrastructure or building failure

Heat wave

## What are acute shocks?

Earthquake  
Wildfires  
Flooding  
Sandstorms  
Extreme cold  
Hazardous materials accident  
Severe storms and extreme rainfall  
Terrorism  
Disease outbreak  
Riot/civil unrest  
Infrastructure or building failure  
Heat wave

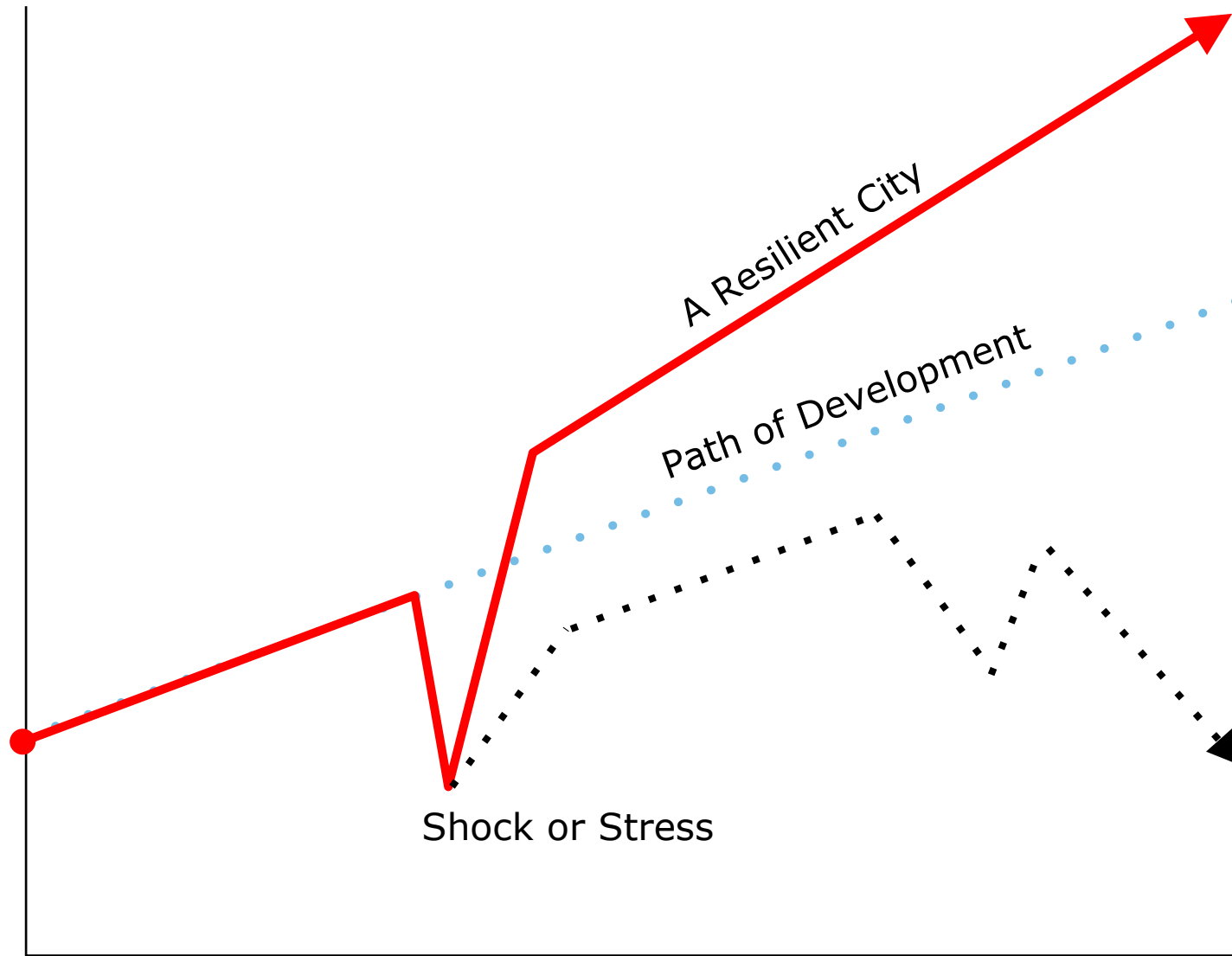
## What are chronic stresses? <sup>6</sup>

Water Scarcity  
Lack of affordable housing  
Poor air quality  
High unemployment  
Homelessness  
Changing demographics  
Lack of social cohesion  
Poverty/inequity  
Aging Infrastructure  
Shifting macroeconomic trends  
Crime & violence

# URBAN RESILIENCE

Is the capacity of individuals, communities, institutions, businesses, and systems within a city to survive, adapt, and grow no matter what kinds of **chronic stresses** and **acute shocks** they experience.

Shocks and stresses can bring opportunities for cities to evolve, and in some circumstances, transform.

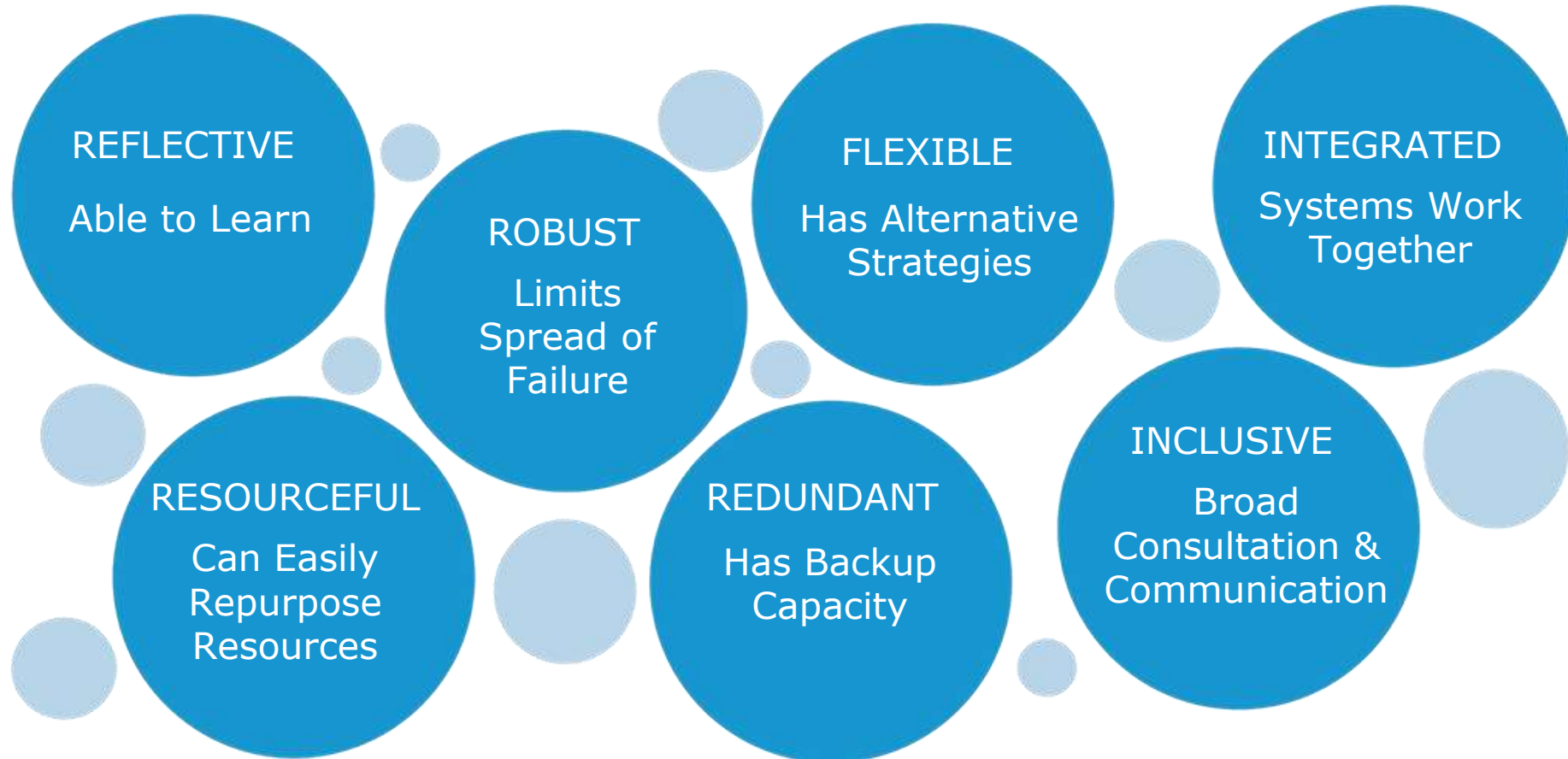


100 RESILIENT CITIES



# Qualities of resilient systems

Resilient systems exhibit certain qualities that enable them to withstand, respond, and adapt more readily to shocks and stresses.







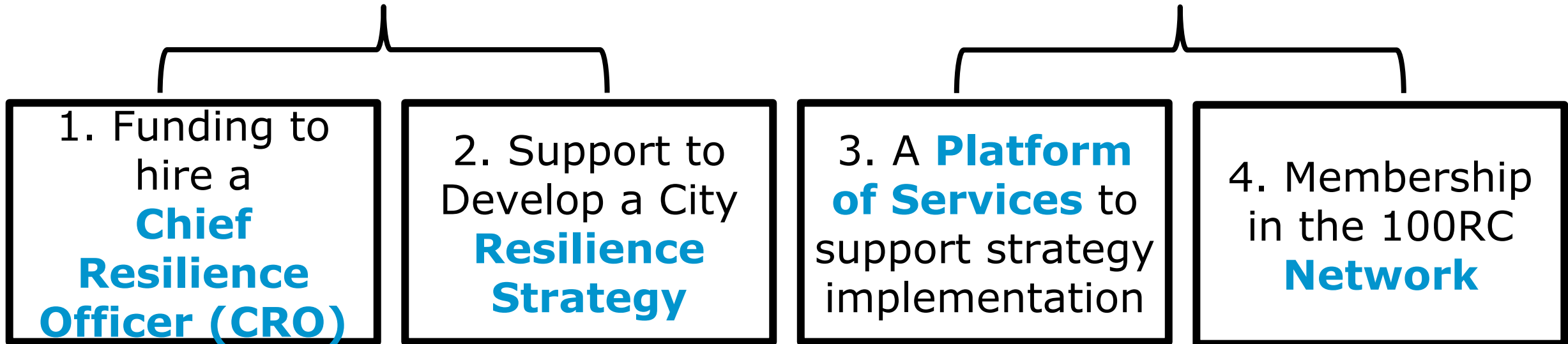
# 100RC AIMS TO SOLVE TWO PROBLEMS:

1. Cities are complex, siloed ecosystems
1. Existing solutions do not scale or reach cities efficiently

# 100RC provides cities 4 types of support to address these problems <sup>12</sup>

TO HELP COMPLEX URBAN SYSTEMS  
ORGANIZE AND INTEGRATE AROUND  
RESILIENCE

TO SCALE SOLUTIONS  
EFFICIENTLY



# What is the 100RC Platform?



The Platform consists of tools and services that cities can draw upon to develop and implement their resilience strategies.

Our Platform has grown to 37 partners offering 45 services, representing over \$100 million of value to our member cities

*Sample list of Partners*

# Our Member Cities

100RC selected its first group of 32 cities in December 2013, and announced 35 new cities in December 2014. Our 67 member cities span 40 countries and 24 languages. We will launch the Challenge to select the final 33 cities in late 2015.



PIONEERED BY THE  
ROCKEFELLER FOUNDATION

100



CITIES

# PROGETTO 100 CITTÀ RESILIENTI



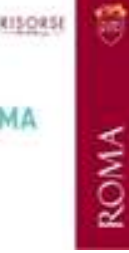
RISORSE  
PER ROMA



ROMA

100 RESILIENT CITIES

# Designing the Resilience Strategy



## Phase II: 4-6 months

Rapid diagnostic & stakeholder engagement

Deep & focused diagnostic resulting in actionable initiatives

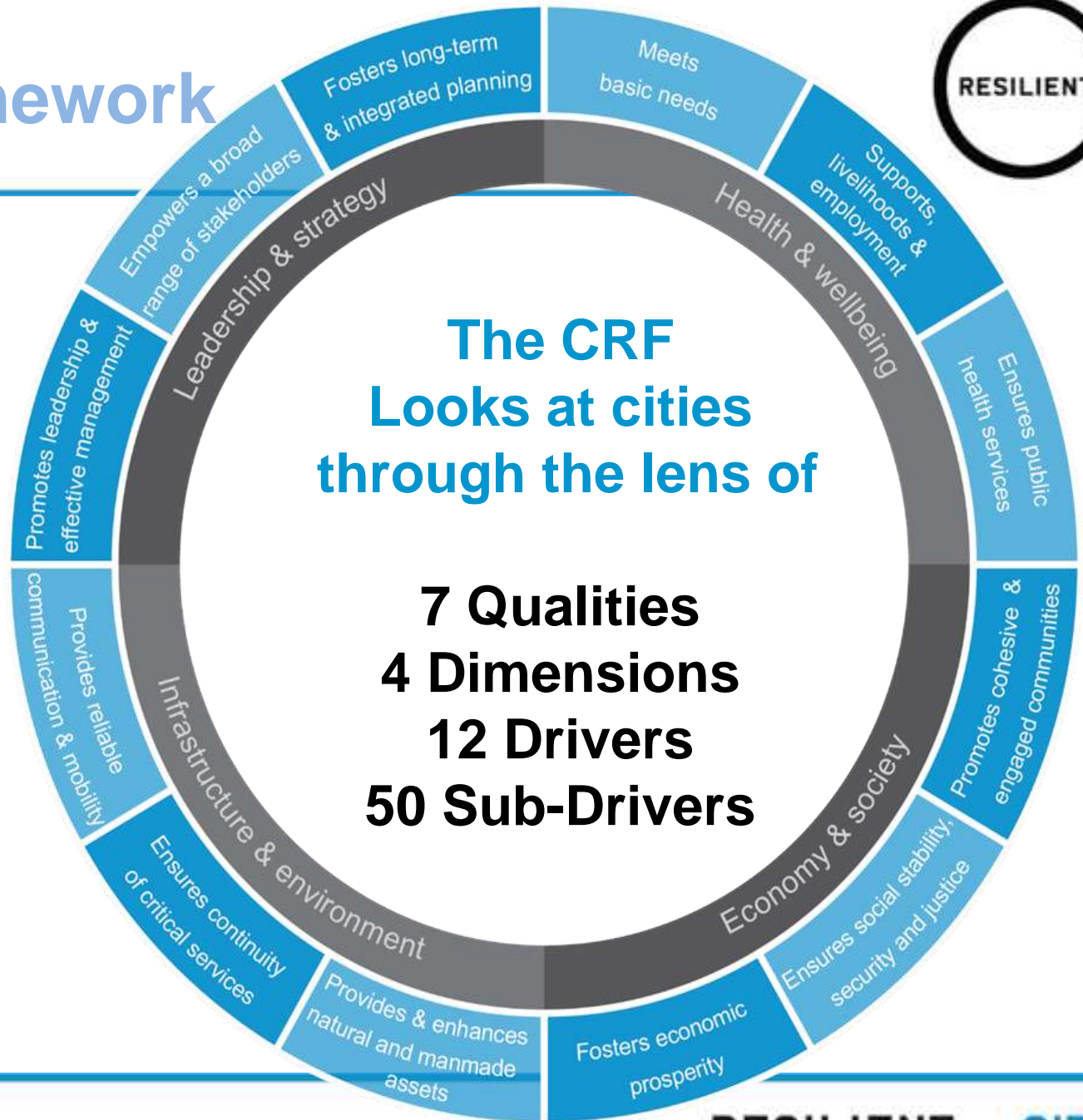
Implementation

6-9 months

The 100RC Resilience Strategy Process is a 6-9 month effort led by the CRO to develop a roadmap to resilience for the city. It is a deliberate process to engage a broad range of stakeholders, leverage existing plans and actions, identify cities' unique resilience priorities, and generate an actionable set of initiatives.



# The city resilience framework



# The stakeholder engagement process

## Workshops

## On-line consultation

## High profile focus groups on critical assets

- Mobility Infrastructures
- Water Infrastructures
- Technological Networks
- Heritage Assets
- Natural Assets
- Urban Services



# The stakeholder engagement process and its tools



Information acquired during the stakeholder engagement process will be processed through different tools.

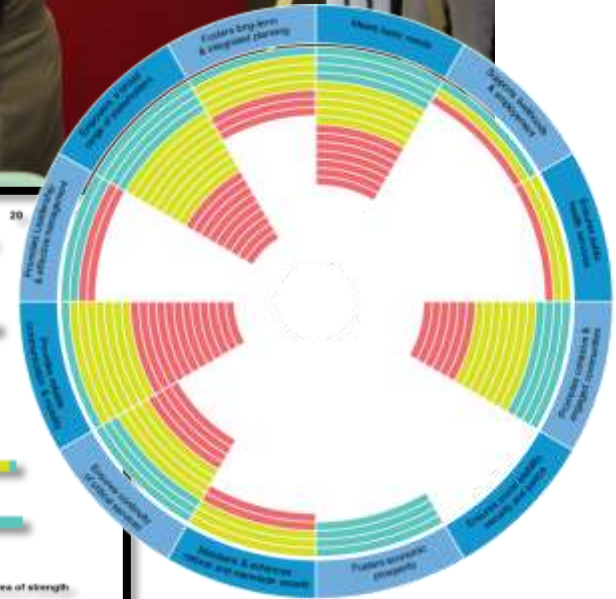
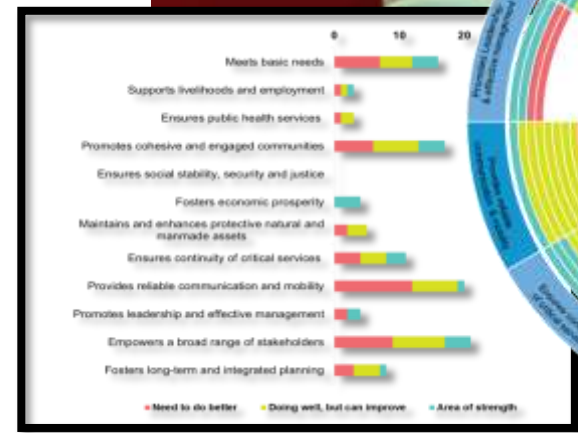


**Table 4 Shook screening matrix**

		Likelihood		
		Low	Medium	High
Consequence	Low	L	M	M
	Medium	L	M	H
	High	M	H	H

**Perceptions Input: Factors and Rating**

Category	Category Detail	Enter Factor mentioned by stakeholder	Provide Additional Narrative
Business	Representative from the IT sector	We have good IT convergence plans which are being rolled out across major businesses within the city	11 awarded 25/55
Civil Society	NGO Focus on Earth	The religious areas on north-east coastline now have protected status as a place of natural importance	Marine Day sea - 10m beach, important for wildlife and fishing
Business	Chamber of commerce	We have a strong tourism sector thanks to the local architecture and history of the old town	The historic water streets fallow once a year (Dive for tourists, 2012)
Government		Clean water is provided to 99% of houses	From the 2011 report, 42% of these fall within the 91-95 demographic
Civil Society	Homeless Charity Inpage	There is a large homeless population of both alcohol misuse sufficient housing and livelihood support	3 different languages spoken, only 72% speak the official language, this has increased in recent years due to improvements in education and social programmes
Civil Society	Professor of social science, City University	City is made up of several local languages which can when reduce collective community cohesion	Annual festival of culture
Civil Society	Social NGO - relate	Community has been successful in helping process cultural understanding and appreciation	



PIONEERED BY THE  
ROCKEFELLER FOUNDATION

100 RESILIENT CITIES



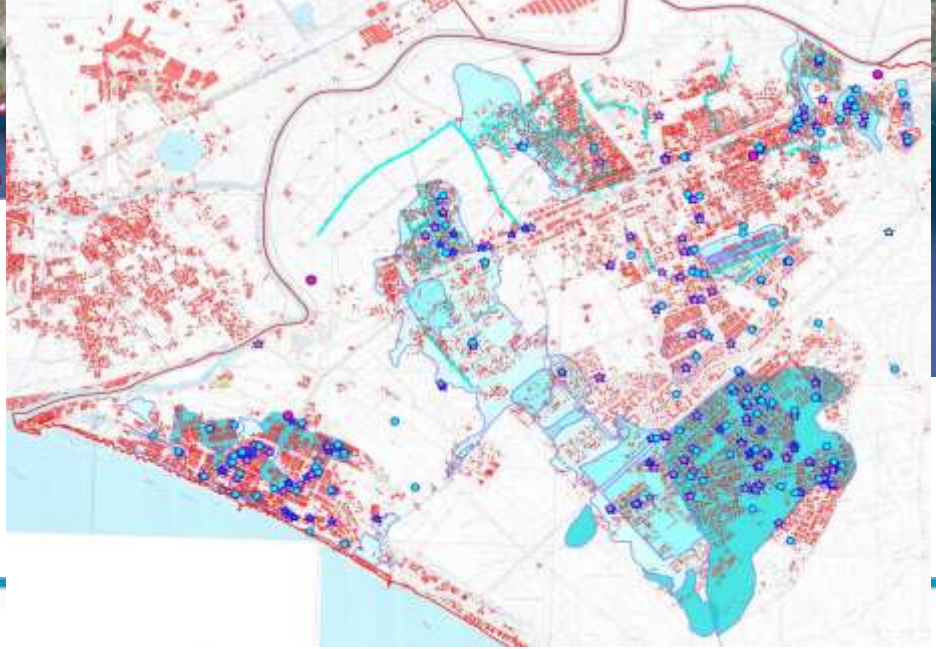
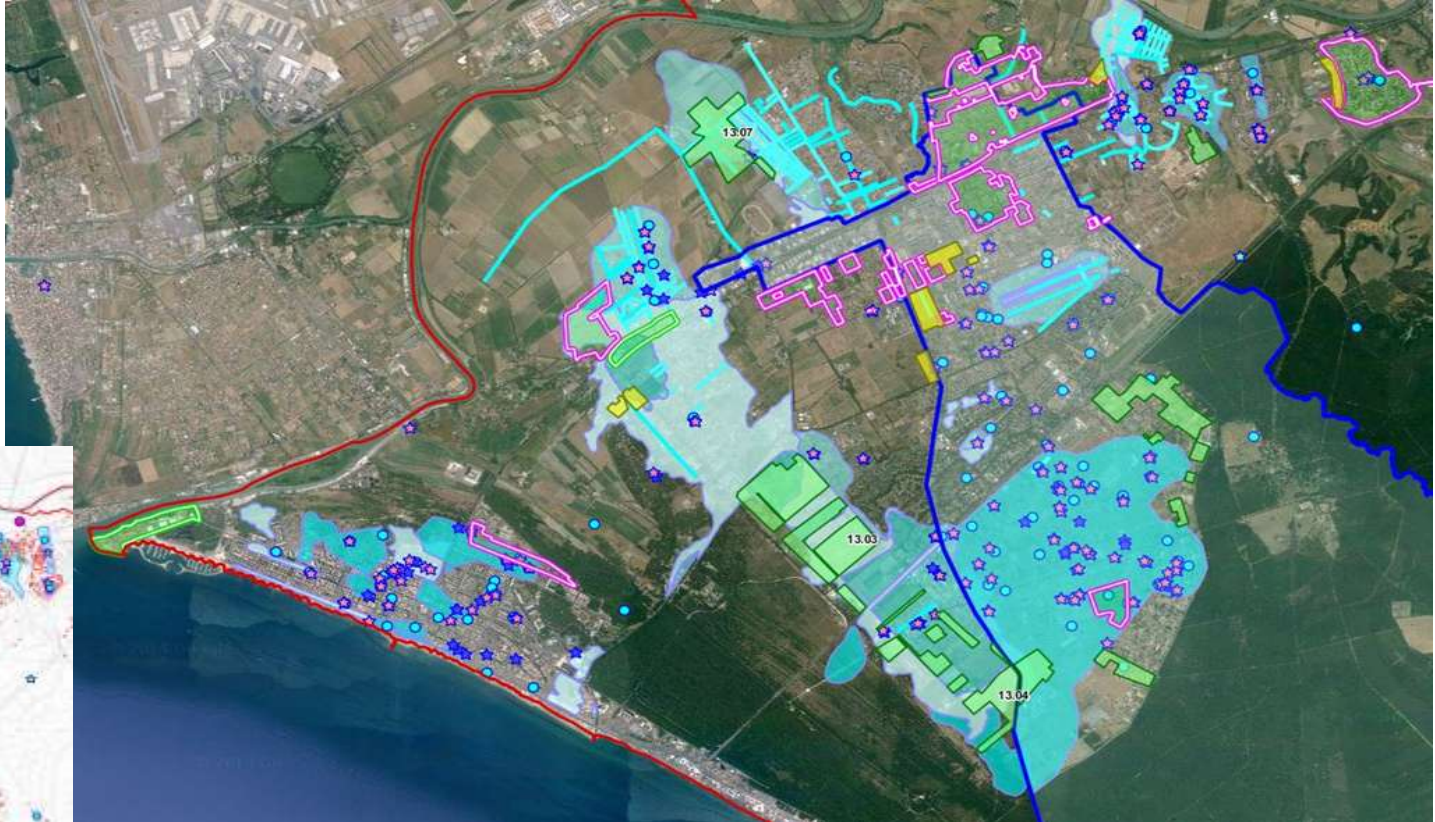
# PROGETTO 100 CITTÀ RESILIENTI



ROMA

## Urban Resilience and Geo-Spatial Data in Rome

# Mapping flooding risk



# Mapping state and city properties



Conservatoria immobiliare  
Banca dati del Patrimonio  
Beni confiscati  
ex D. Lgs 159/2011  
P.E.E.P. l. 18 aprile



ACEA spa  
ATAC spa (ATAC Patrimonio)  
AMA spa  
Altre società partecipate



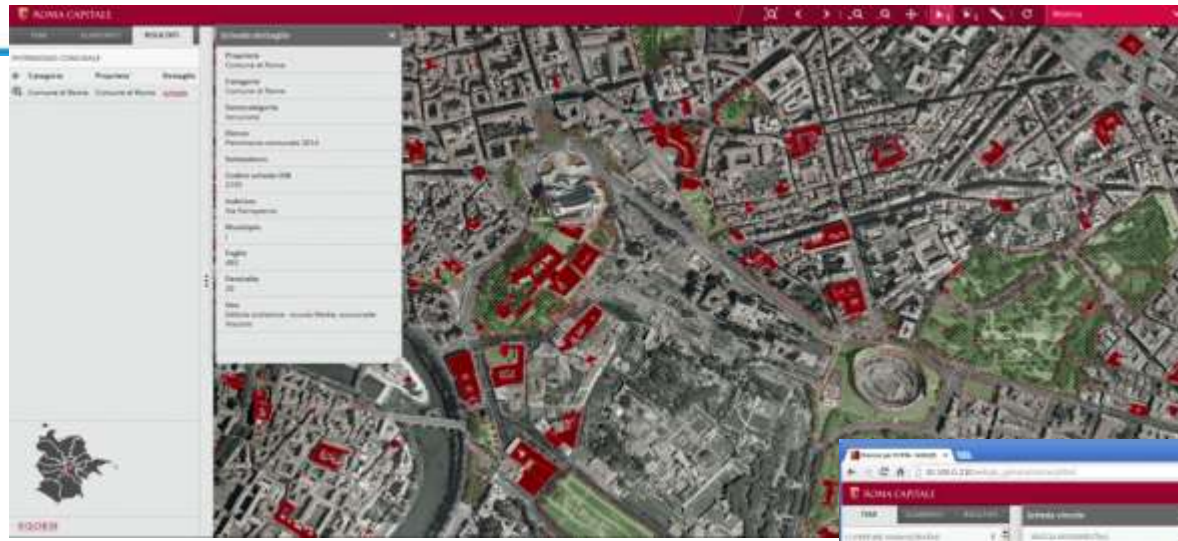
ENTI PREVIDENZIALI  
ANAS spa  
EUR spa  
Altre società ed Enti pubblici



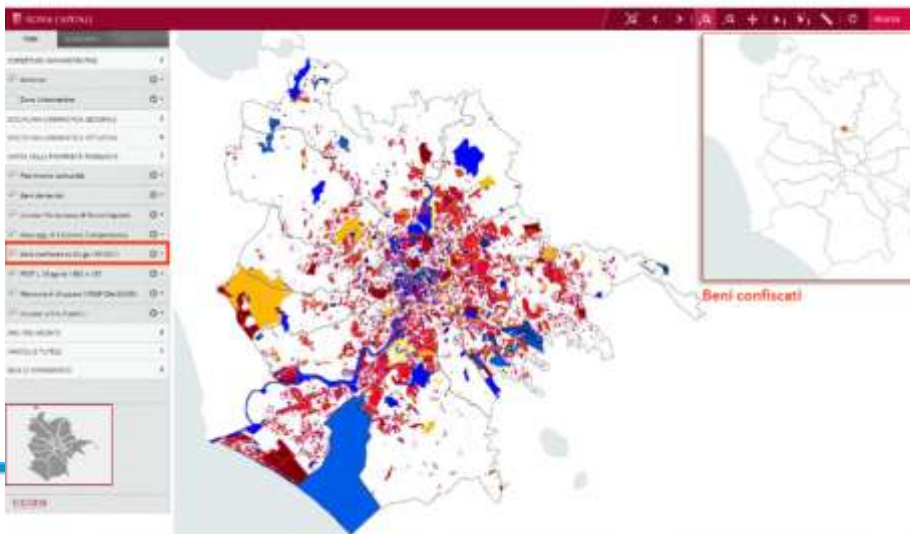
REGIONE LAZIO  
PROVINCIA di ROMA



Beni demaniali  
Beni del Patrimoni indisponibile  
(Beni in Uso governativo,  
Dotazioni del Presidente della Repubblica)  
Beni demaniali  
Beni c.d. Federalismo demaniale



## Livelli informativi



# Mapping residents' claims and ideas



**ROMA CAPITALE** **RISORSE**

**CONFERENZA URBANISTICA MUNICIPALE**  
**SCHEDE DI PRESENTAZIONE DEI PROGETTI**

**1. IDENTIFICAZIONE DEL PROGETTO**

Municipio: **SECONDI**

Denominazione del PROGETTO: **ESTENSIONE SERVIZIO TRASPORTO PUBBLICO COLLETTIVO AL COMPARTIMENTO DI PRATO DELLA SIGNORA (TRAVOLO: mobilità, connessioni, reti)**

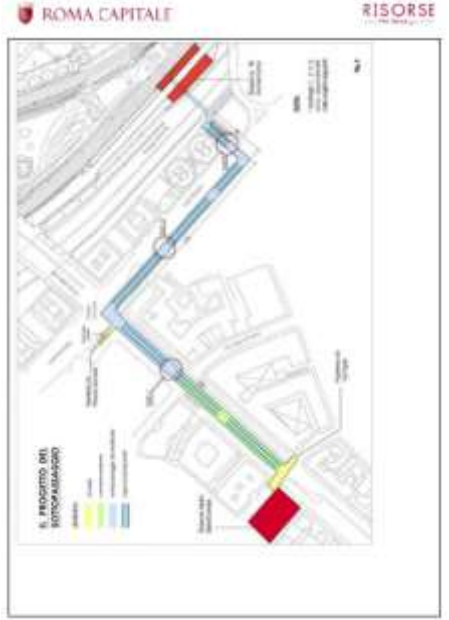
Argomento/proponimento: **ASSOCIAZIONE ABITANTI PRATO DELLA SIGNORA E ZONE COLLEGATE**

Area di localizzazione dell'intervento\*: **PRATO DELLA SIGNORA, LARGO SOMALIA (DI VEDIANO LA PLANNOMETRI ALLEGATE)**

\* allegare cartografia

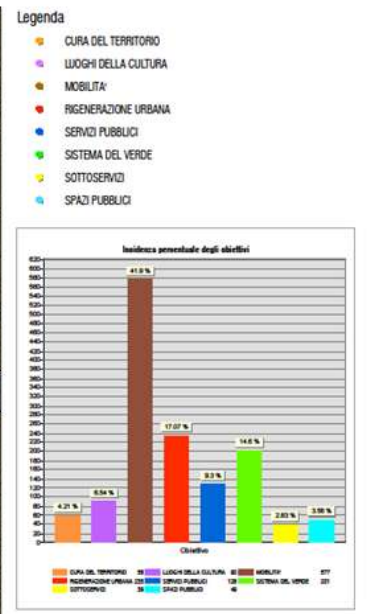
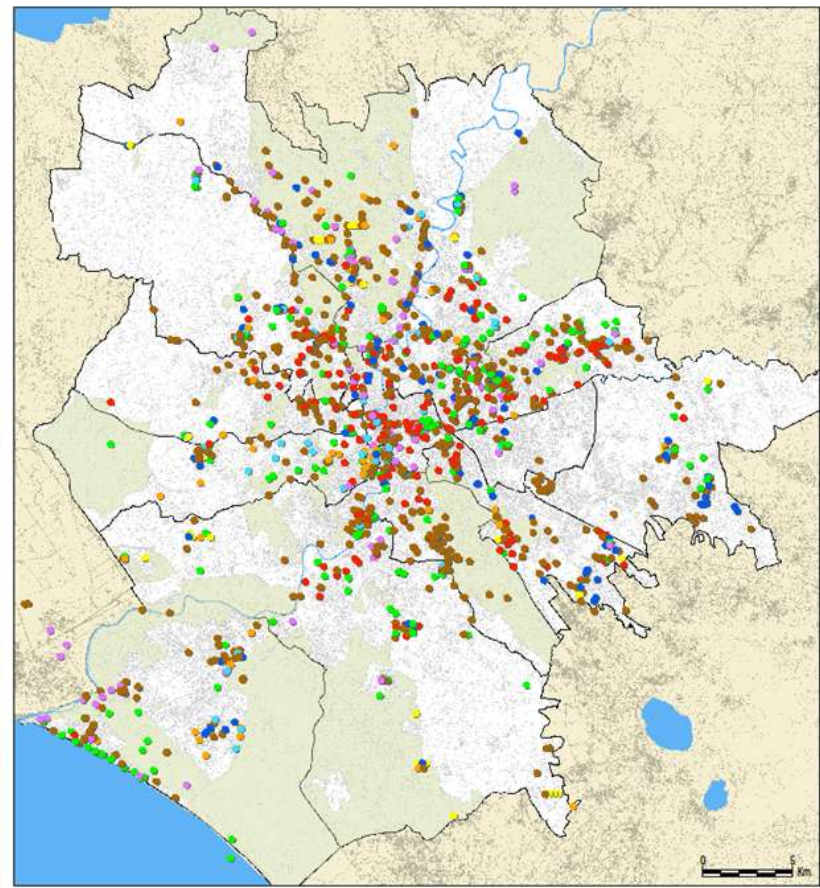
**2. SINTESI DELLA PROPOSTA**

con le presenti la scrivente associazione richiede il collegamento del comprensorio di Prato della Signora (circa 1300 persone) alla rete di trasporto pubblico collettivo, dalla strada al trattamento autorizzato. In sostituzione si richiederebbe che la linea Bus Area 342, che



**ROMA CAPITALE**  
 Assessorato Trasformazione Urbana - Dipartimento Programmazione e Attuazione Urbanistica

Conferenza Cittadina - quadro d'unione delle schede progetto



MUNICIPIO	OBIETTIVI							TOTALE
	CONSERVAZIONE DEL PATRIMONIO	CONSERVAZIONE DEL PATRIMONIO CULTURALE	CONSERVAZIONE DEL PATRIMONIO CULTURALE	CURA DEL TERRITORIO	SOTTOSERVIZI	SPAZI PUBBLICI	SISTEMA DEL VERDE	
1	1	1	1	1	1	1	1	7
2	1	1	1	1	1	1	1	7
3	1	1	1	1	1	1	1	7
4	1	1	1	1	1	1	1	7
5	1	1	1	1	1	1	1	7
6	1	1	1	1	1	1	1	7
7	1	1	1	1	1	1	1	7
8	1	1	1	1	1	1	1	7
9	1	1	1	1	1	1	1	7
10	1	1	1	1	1	1	1	7
11	1	1	1	1	1	1	1	7
12	1	1	1	1	1	1	1	7
13	1	1	1	1	1	1	1	7
14	1	1	1	1	1	1	1	7
15	1	1	1	1	1	1	1	7
16	1	1	1	1	1	1	1	7
17	1	1	1	1	1	1	1	7
18	1	1	1	1	1	1	1	7
19	1	1	1	1	1	1	1	7
20	1	1	1	1	1	1	1	7
21	1	1	1	1	1	1	1	7
22	1	1	1	1	1	1	1	7
23	1	1	1	1	1	1	1	7
24	1	1	1	1	1	1	1	7
25	1	1	1	1	1	1	1	7
26	1	1	1	1	1	1	1	7
27	1	1	1	1	1	1	1	7
28	1	1	1	1	1	1	1	7
29	1	1	1	1	1	1	1	7
30	1	1	1	1	1	1	1	7
TOTALE	327	327	327	327	327	327	327	327

# Mapping abandoned properties (bottom-up)



**CITY-HOUND** Social network per la trasformazione temporanea degli spazi urbani sottoutilizzati

Cerca, Trova, Trasforma

Home Il Progetto Aggiungi uno spazio Cerca uno spazio Contatti

Posizione: Roma - M. III - Monte Sacro

Status: disponibile

Tipo:

Filtra

Spazi recenti

- edificio (intero)
- edificio (parte)
- edificio (intero)

Login

Login \*

Password \*

Login

**CITY-HOUND** Social network per la trasformazione temporanea degli spazi urbani sottoutilizzati

Cerca, Trova, Trasforma

Home Il Progetto Aggiungi uno spazio Cerca uno spazio Contatti

Spazi recenti

- edificio (parte)
- VILLA CERTOSA
- spazio pubblico
- ATTIVANDO LA PARTECIPAZIONE!
- spazio verde
- spazio pubblico
- edificio (intero)
- IL PERCOLATO
- CREATIVE MARKET
- LA CASSETTA

LOGIN

Login \*

Password \*

Login



# Leveraging on geo-spatial data to build resilience



## **More complexity**

Resilience is broadening the understanding of risks and opportunities leveraging on the use and creation of new data sets to inspire policy

## **More integration**

Resilience is integrating different claims, demands and challenges across policy-making processes leveraging on their geo-spatialization in new integrated platforms

## **More participation**

Resilience is extending and deepening residents' participation leveraging on their ability to create and spread data and information and to pressure city governments for change and better policy